

Transferring Data from an IBM/PC Computer to the Lightwriter

Windows 95/98 and XP and Lightwriter Software 5.X

Setting Up the Lightwriter

1. Turn your Lightwriter on.
2. Press “Mem Replay” to get into Setups
3. Press “P” to get to Port 1
4. Press the plus (+) key until the display reads “Port 1: Link”
5. Turn LightWRITER OFF
6. Plug the cable into port 1 on the Lightwriter (on right side of the Lightwriter). Plug the other end of the cable into the COM 1 or 2 port on your computer.

Setting Up Your Computer

1. Go to the Start Menu and choose All Programs.
2. Go to Accessories, Communications and then choose Hyperterminal.
3. In Hyperterminal the new connection box will appear.
4. Type in “Lightwriter” as the new connection name

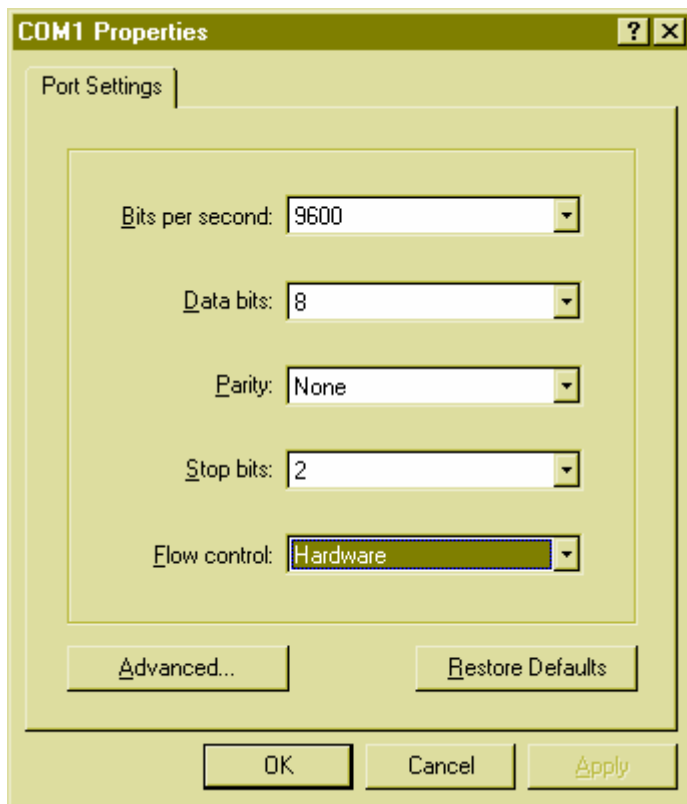


5. Click on “OK”.
6. Set Connect using to “Direct to COM 1” (or COM 2 if you plugged the Lightwriter into COM 2).



7. Click on OK.

8. Change all the settings to the ones listed here:



- Bits per second = 9600
- Data Bits = 8
- Parity = None
- Stop bits = 2
- Flow control = Hardware

9. Click OK.

Setting up the Data to be transferred from the computer

1. Open a new file in MS Word, WordPad or Notepad. Type the word [Memories] as in the example below and then the memories you wish to store. You can also add items to your dictionary as in the example. The file will need to have the format shown in the example below. It is important to follow the same spaces and punctuation as shown.

```
[Memories]
B4=BEFORE
H=HEARD ANY GOOD GOSSIP LATELY
J=WHY DON'T TEDDY BEAR BISCUITS WEAR SHORTS? COS THEIR
LEGS ARE CRUMBY!
MH=METRO HOSPITAL
RMR=ROGER MC REYNOLDS
SMH=SYDNEY MORNING HERALD
B=LET'S GO TO THE TABERET
```

```
[Dictionary]
MC=MECK
RAE=RAY
SEAN=SHORN
TUVALET=TU A LET
TRAYCEY=TRACEY
```

2. Save this file as a text (.txt) file.

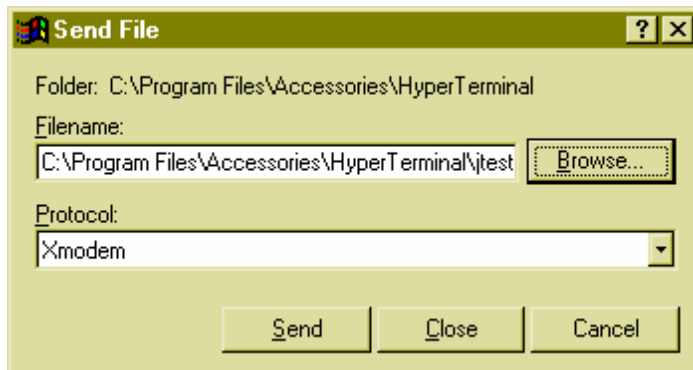
Changing your Memories

1. When you send Memories to your Lightwriter from the computer it is important to consider whether you want to erase the Lightwriter memories or not. The computer to Lightwriter transfer will replace existing memories stored in the same location, however it does not erase Lightwriter memories which are not in the list on the PC. If you want to erase your Lightwriter memories press “Mem Mem Mem Shift Fullstop X N Y Y Y Y”.

Setting Up the Transfer from the Computer to the Lightwriter

1. On the Lightwriter press “Mem Mem Mem Shift Fullstop D.

2. On the computer go to the Transfer menu and choose “Send File”. Select the file you saved earlier. You may find it easier to find the file using the browse button. Change receiving protocol to “Xmodem”.



3. Press “Y” for yes on the Lightwriter. The Lightwriter screen should say “Init Rx”
4. Click Send on the computer.
5. The transfer window will show the transfer of information. When the transfer is completed the window will disappear.
6. You should now be able to try out your new memories on the Lightwriter.

Saving your Lightwriter session

1. When you exit from Hyperterminal it will ask you whether you want to save your Lightwriter session. If you choose to save it a Lightwriter item will appear in the Hyperterminal window in the future. You can then double click on this without having to set Hyperterminal up for the Lightwriter each time.

N.B. It is anticipated that the person using these instructions will be familiar with the Windows '95 operating environment.

Transferring Data From the Lightwriter to IBM/PC Computer

Windows 95/98 and Lightwriter Software 5.6 18/3/97

Setting Up the Lightwriter

1. Turn your Lightwriter on.
2. Press “Mem Replay” to get into Setups
3. Press “P” to get to Port 1
4. Press the plus (+) key until the display reads “Port 1: Link”
5. Plug the cable into port 1 on the Lightwriter (on the right side of the Lightwriter). Plug the other end of the cable into the COM 1 or 2 port on your computer.

Setting Up Your Computer

1. Go to the Start Menu and choose Programs.
2. Go to Accessories and choose Hyperterminal.
3. In Hyperterminal double click on “Hypertrm”.
4. Type in “Lightwriter” as the new connection name

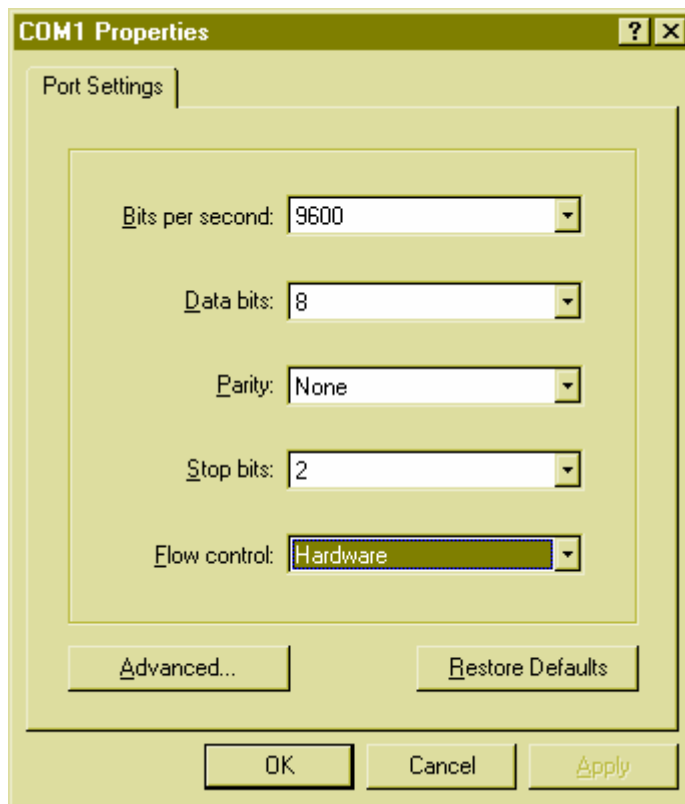


5. Click “OK”.
6. Set Connect using to “Direct to COM 1” (or COM 2 if you plugged the Lightwriter into COM 2).



7. Click OK.

8. Change all the settings to the ones listed here:

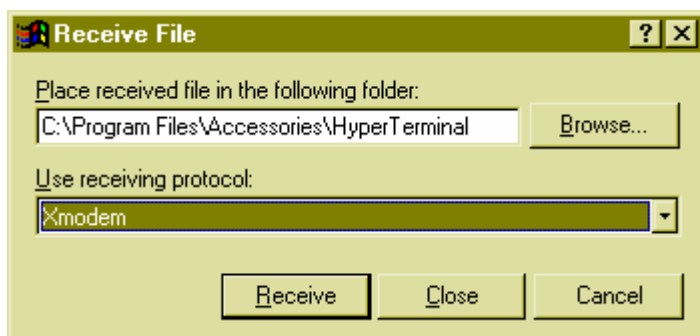


- Bits per second = 9600
- Data Bits = 8
- Parity = None
- Stop bits = 2
- Flow control = Hardware

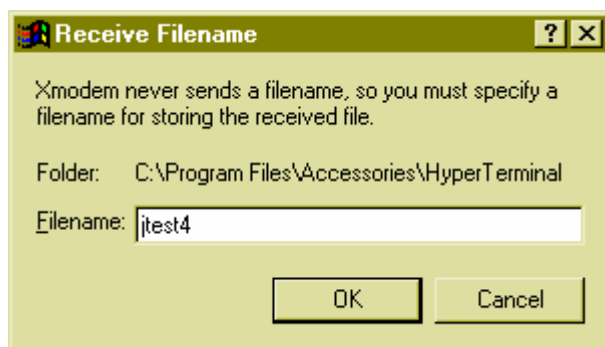
9. Click OK.

Setting Up the Transfer from the Lightwriter to the Computer

1. Go to the Transfer Menu and choose “Receive File”
2. Choose where you want to save the file and set the receiving protocol to Xmodem.

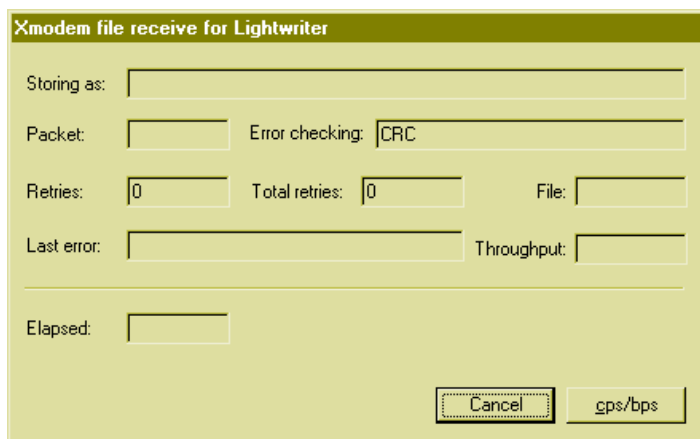


3. Click Receive.
4. Type in the name you want to save the file under.



Do not click OK yet.

5. On the Lightwriter press “Mem Mem Mem Shift Fullstop U Yes”
6. The Lightwriter will display “Init Tx”
7. Click OK in the Receive File dialogue box shown in step 4
8. You should now have the transfer window as shown below.



9. Once the transfer has finished the Transfer window will disappear if there have been no problems.
10. You can now open the data received by the computer in MS Word, Notepad or Wordpad. In any of these applications go to the File menu and choose open. You then need to choose the file you have just saved.

Saving your Lightwriter session

1. When you exit from Hyperterminal it will ask you whether you want to save your Lightwriter session. If you choose to save it a Lightwriter item will appear in the Hyperterminal window in the future. You can then double click on this without having to set Hyperterminal up for the Lightwriter each time.

N.B. It is anticipated that the person using these instructions will be familiar with the Windows '95/'98 operating environment.